



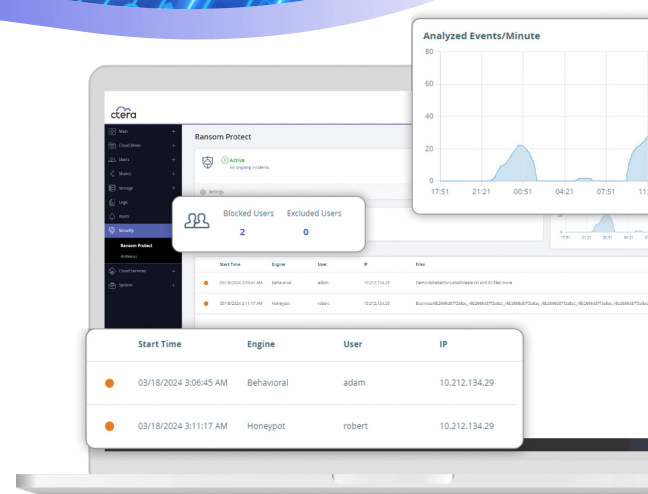
CTERA Cyber Protection Data Service

Fortifying Your Data Against Advanced Threats

Threats are everywhere, ever growing, ever evolving. In this landscape, a reactive security posture is a losing strategy. CTERA Cyber Protection Data Service shifts the paradigm, moving your defense from reactive to proactive. It offers a comprehensive suite of security features designed to safeguard your critical file data from evolving cyber risks. As a native extension of the CTERA Intelligent Data Platform, this robust Enterprise Data Services add-on provides multi-layered defense mechanisms architected from the core to meet the highest industry standards.

Key Features

- ✓ **CTERA Ransom Protect:** Utilizes AI-driven technology to proactively identify and block zero-day ransomware attacks, keeping your data safe and your business operational.
- ✓ **Malware Protection:** Powered by Bitdefender Antivirus, this feature guards your network's edge, stopping malware before it can infiltrate and compromise critical systems.
- ✓ **Enterprise Key Management Integration:** Works with your existing cryptographic key management platform, ensuring compliance with your organization's established security protocols.
- ✓ **Advanced Incident Management:** Ensures instant admin awareness of critical security events through immediate SMTP alerts, enabling swift resolution to minimize impact.
- ✓ **Secure Data Erasure:** Enables compliance officers to permanently and securely delete data, ensuring privacy and adherence to regulations like GDPR and HIPAA.
- ✓ **Data-Exfiltration Prevention:** Employs honeypots to detect data theft, triggering immediate alerts and halting access to prevent the unauthorized transfer of sensitive information.
- ✓ **Varonis Data Platform Connector:** Enhances threat detection and log analysis through seamless syslog integration, bolstering your security and compliance posture.
- ✓ **Microsoft Sentinel Connector:** Stream CTERA audit events into Microsoft Sentinel to correlate file activities with your enterprise-wide threat intelligence.
- ✓ **U.S. DoD STIG-Compliant:** Demonstrates a commitment to top-tier security by meeting one of the industry's most stringent cybersecurity certifications.
- ✓ **FIPS 140-3 Certified Cryptography:** Employs FIPS-validated encryption modules, aligning with the highest federal standards for robust data security and integrity.



How It Works

CTERA Cyber Protection Data Service hardens the CTERA platform by integrating a suite of advanced security features that work in concert to protect, detect, and respond to threats.

Protect



AI-powered ransomware detection and industry-leading antivirus block threats at the source, while FIPS 140-3 certified cryptography and key management integration ensure data is secure at rest and in transit.

Detect



The system actively monitors for anomalies, including sophisticated data exfiltration attempts and suspicious user behavior, leveraging integrations with platforms like Varonis for deeper analysis.

Respond



Upon detecting a threat, automated alerts are sent to administrators, access can be blocked, and incident response procedures are initiated to contain and neutralize the risk. Secure data erasure tools provide a compliant way to manage data lifecycle and spillage.



Synergy7's Cybersecurity Lab confirmed that CTERA Ransom Protect achieved **100% detection** across eight prevalent ransomware families. The system stopped attacks with a median time to block of just **24.5 seconds**, limiting the median encryption impact to a mere **2.28% of files**, stark contrast to the total data loss typically seen in reactive scenarios.

READ REPORT

Ransomware Test Report



Company: CTERA
Date: November 2023
Tested By: Synergy7 Cyber Lab

Key Benefits

- 1 Defend Against Zero-Day Threats**
Proactively protect against the latest ransomware and malware variants with AI-driven threat detection.
- 2 Prevent Data Breaches**
Stop unauthorized data exfiltration in its tracks with real-time monitoring and automated blocking.
- 3 Integrate with Your Security Ecosystem**
Seamlessly connect with your existing key management and data security platforms like Varonis. Integration with SIEM products including but not limited to Splunk and Microsoft Sentinel.
- 4 Accelerate Incident Response**
Equip your security team with immediate alerts and the forensic data needed to respond to incidents quickly and effectively.
- 5 Ensure Regulatory Compliance**
Meet stringent government and industry standards, including DoD STIG and FIPS 140-3, and simplify data privacy adherence..

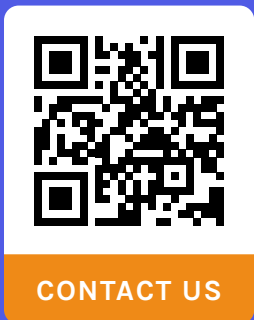


AVAILABILITY

CTERA Cyber Protection Data Service is available as a licensed add-on Enterprise Data Service for the CTERA Intelligence Data Platform.

Learn more about how CTERA Cyber Protection Data Service can secure your organization's data by visiting our website or contacting a CTERA representative today.

[LEARN MORE](#)



CTERA.COM

info@ctera.com

USA: (917) 768-7193

Intl: +972-3-679-9000

